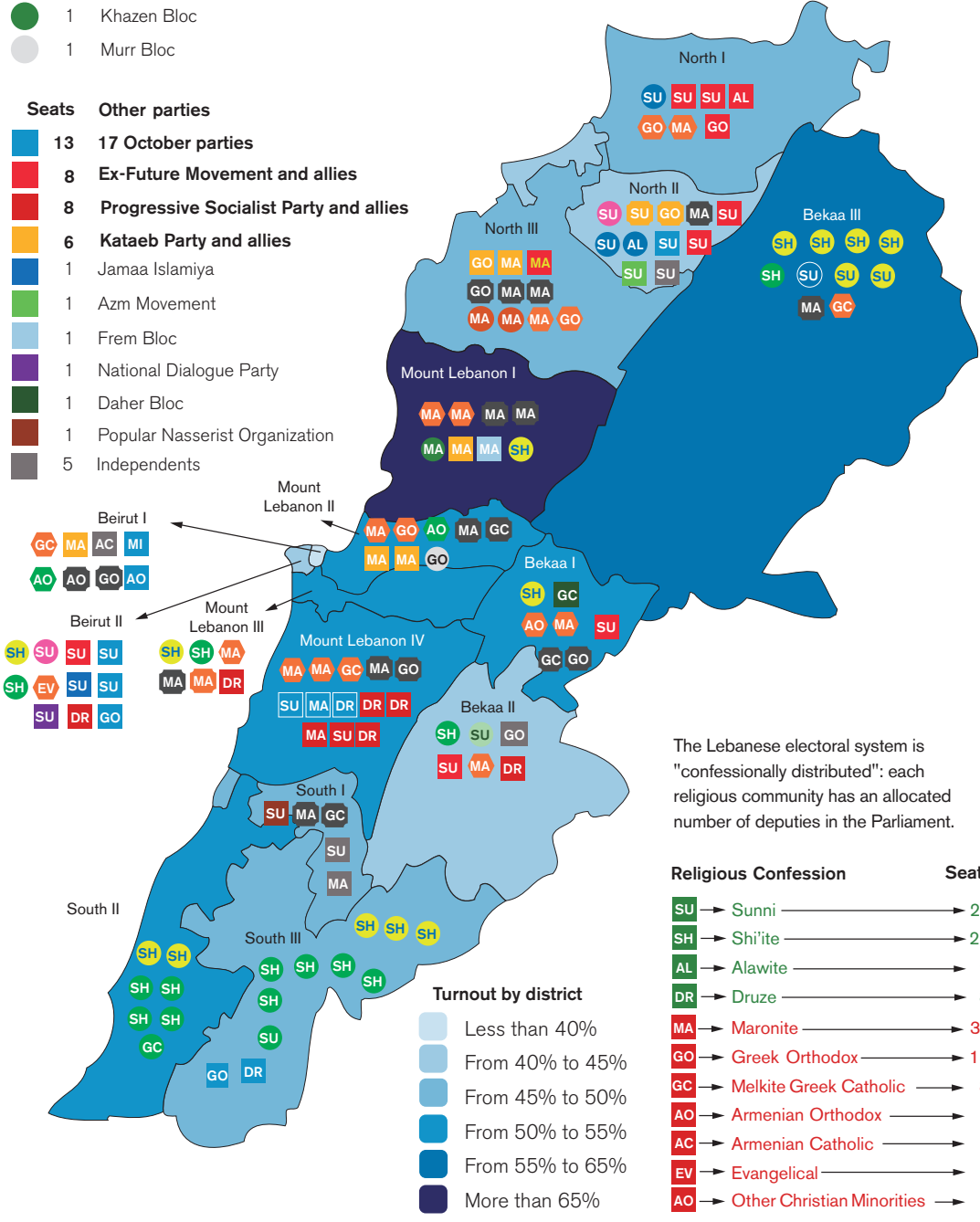


MAP A.1 | 2022 Lebanese General Election (15 May 2022)

<b>Seats</b>	<b>Party</b>	<b>Seats</b>	<b>Party</b>
41	<b>Amal - Hezbollah and allies</b>	20	<b>Free Patriotic Movement and allies</b>
15	Amal & Pro-Amal independents	17	Free Patriotic Movement & Pro-FPM independents
15	Hezbollah & Pro-Hezbollah independents	3	Armenian Revolutionary Federation
4	March 8 Affiliates	21	<b>Lebanese Forces and allies</b>
2	Marada Movement & Pro-Marada independents	18	Lebanese Forces & Pro-LF independents
2	Al-Ahbash	2	Rifi Bloc
1	Union Party	1	National Liberal Party
1	Khazen Bloc		
1	Murr Bloc		

<b>Seats</b>	<b>Other parties</b>
13	<b>17 October parties</b>
8	<b>Ex-Future Movement and allies</b>
8	<b>Progressive Socialist Party and allies</b>
6	<b>Kataeb Party and allies</b>
1	Jamaa Islamiya
1	Azm Movement
1	Frem Bloc
1	National Dialogue Party
1	Daher Bloc
1	Popular Nasserist Organization
5	Independents



The Lebanese electoral system is "confessionally distributed": each religious community has an allocated number of deputies in the Parliament.

Religious Confession	Seats
SU → Sunni	27
SH → Shi'ite	27
AL → Alawite	2
DR → Druze	8
MA → Maronite	34
GO → Greek Orthodox	14
GC → Melkite Greek Catholic	8
AO → Armenian Orthodox	5
AC → Armenian Catholic	1
EV → Evangelical	1
AO → Other Christian Minorities	1

<b>Turnout by district</b>
Less than 40%
From 40% to 45%
From 45% to 50%
From 50% to 55%
From 55% to 65%
More than 65%

Own production. Source: Lebanon Elections <https://elections.gov.lb/>; Wikipedia [https://en.wikipedia.org/wiki/2022\\_Lebanese\\_general\\_election](https://en.wikipedia.org/wiki/2022_Lebanese_general_election); L'Orient le Jour, Législatives 2022 [www.lorientlejour.com/elections/](http://www.lorientlejour.com/elections/)